



GOOD MORNING
Have Good Trading Day

TUESDAY



Price is what you pay.
Value is what you get.

- Warren Buffet

MARKET PLUSE

INDIAN INDICES

NAME	CMP	NET CH.	%
SENSEX	26283	-109	-0.41
NIFTY	7971	-30	-0.38

INDIAN ADR'S

SYMBOL	CLOSE	GAIN/ LOSS %
DRREDDY	65.07	+1.89
HDFCBANK	56.99	-2.40
ICICIBK	8.72	-1.69
INFY	17.15	-2.06
TATAMOTOR	25.32	-1.29
WIPRO	11.71	-1.01

FII AND MF ACTIVITY

SYMBOL	In Crs.
FIIs Eq (Provisional)	-551.19
FIIs Index Future	538.89
FIIs Index Options	1400.92
FIIs Stock Future	658.83
FIIs Stock Options	55.62
DII's Eq (Provisional)	478.59

CURRENCY

RBI RATE	31-AUG-2015
RUPEE - \$	66.3062
EURO	74.4950
YEN 10	54.7500
GBP	102.3105

MARKET PLUSE

GLOBAL INDICES

NAME	CMP	NET CH.	%
DOW	16528	-114	-0.69
NASDAQ	4776	-51	-1.07
NIKKEI	18440	-450	-2.38
HANG SENG	21534	-136	-0.63
SGX NIFTY	7913	-87	-1.09

WORLD COMMODITIES

FUTURE	U\$\$	CHANGES
CRUDE	47.71	-1.49
NATURAL GAS	2.689	Unch
GOLD	1139.7	+7.2
SILVER	14.635	+0.049
COPPER	2.3295	-0.0080

WORLD EVENTS

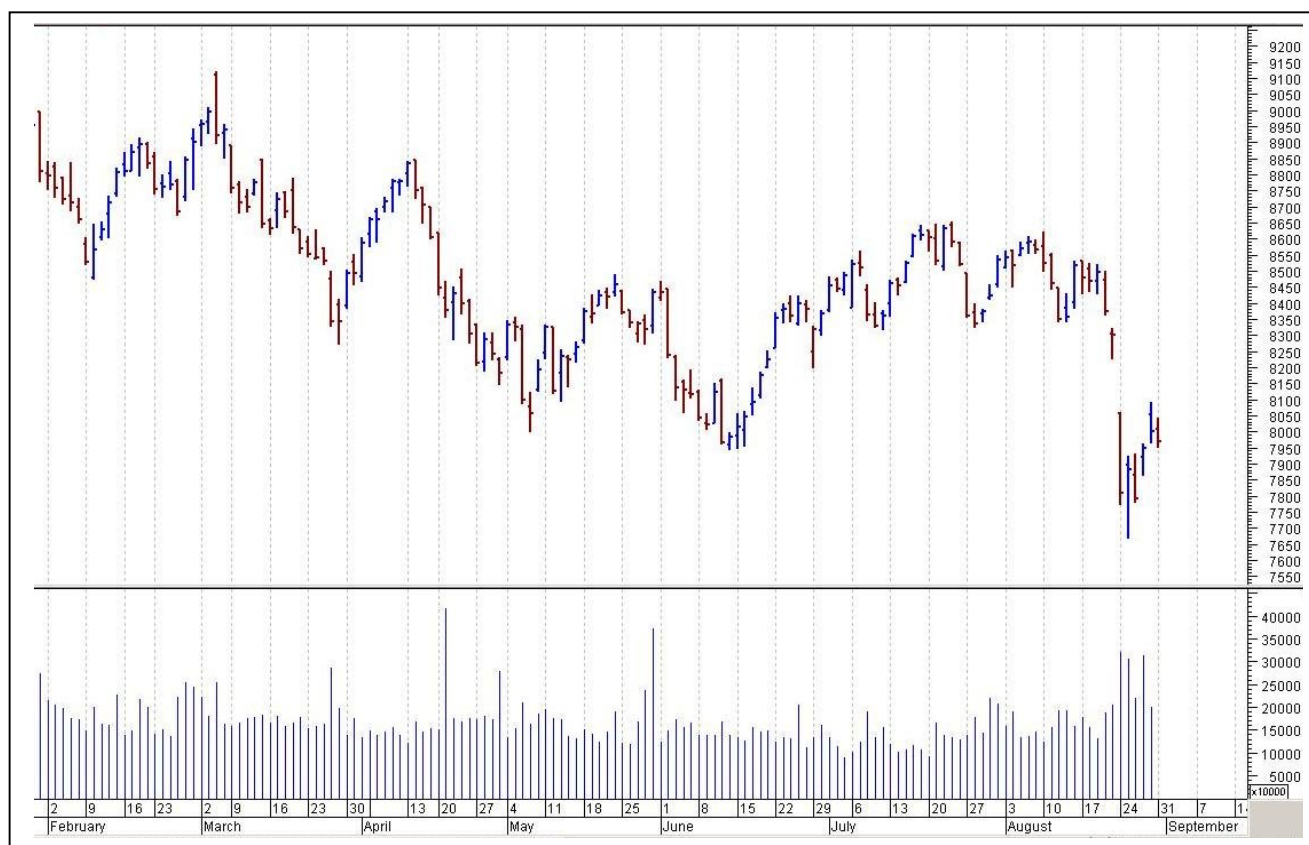
- US: ISM Manufacturing PMI
- UK: Manufacturing PMI

TOP STORY

- April-July fiscal deficit at Rs 3.85 lakh crore versus Rs 3.25 lakh crore (YoY)
- Q1FY16 GDP growth at 7 percent versus 7.5 percent (QoQ); 6.7 percent (YoY)
- RBI names SBI & ICICI Bank as domestic systemically important banks (D-SIBs)
- Petrol prices cut by Rs 2/litre & diesel by 50 paise/litre
- Government allows Reliance Industries (RIL) to sell LPG to cooking gas marketers
- IOC set to plan USD 3 billion petchem plant in Iran: FE
- Natco plans 5 new products for US markets: FE
- HDFC Bank cuts base rate by 0.35 percent to 9.35 percent effective today
- Financial Technologies executes perpetual licence agreement with IEX for one-time fee of Rs 108 crore
- Competition Commission approves Fairfax acquisition of up to 26 percent of IIFL Holdings



NIFTY CHART



MARKET COMMENTARY

The last day of the month characterized the nature of the whole month, with markets witnessing volatility throughout ahead of the quarterly GDP data. Though, the early gains in the markets were induced by hopes that upbeat data will give the central bank enough ammunition to cut interest rates at its next policy meeting on Sept. 29. The rupee weakness for the second straight session on sustained month-end dollar demand, too weighed down the sentiments. The major indices after a mildly soft start kept on moving in and out of the red zone throughout the session. For today's trade Nifty likely to trade in the range between 7990 - 8010 in the upper side and 7940 – 7910 in the lower side.

MARKET LEVELS

	CMP	SUPPORT LEVELS				RESISTANCE LEVELS			
NIFTY	7971	7940	7910	7870	7850	7990	8010	8040	8070
USDINR	66.48	66.40	66.33	66.25	66.10	66.60	66.75	66.82	66.94



FUTURES CORNER

SCRIPS	CLOSE	SUPPORT	TARGET		REMARKS
		STOP LOSS	T1	T2	
GLENMARK (SELL)	1152.95	1168	1130	1118	TRADING CALL
HEROMOTOCO	2408.15	2392	2435	2448	TRADING CALL
WIPRO	573.9	569	581	588	TRADING CALL

EQUITY CORNER

SCRIPS	CLOSE	SUPPORT	TARGET		REMARKS
		STOP LOSS	T1	T2	
MUNJALAU	76.05	74	79	80	TRADING CALL
PCJEWELLER	399.15	394	410	418	TRADING CALL

DELIVERY BASED CALL / INVESTMENT CALL

SCRIPS	CMP	SUPPORT	TARGET		REMARK
		STOP LOSS	T1	T2	

BULK DEALS (BSE)

SCRIP	CLIENT NAME	BUY/SELL	QUANTITY	PRICE
NIL				

BULK DEALS (NSE)

SCRIP	CLIENT NAME	BUY/SELL	QUANTITY	PRICE
JINDALSTEL	SWISS FINANCE CORPORATION (MAURITIUS) LIMITED	BUY	5221767	67.75
JINDALSTEL	ISHARES INDIA INDEX MAURITIUS COMPANY	SELL	4746989	67.62
IBULHSGFIN	ISHARES INDIA INDEX MAURITIUS COMPANY	BUY	2625604	757.24

SCRIP'S IN F&O BAN

(To resume for normal trading below 80% of market wide limit required)

NIL



NIFTY 50 STOCKS: SUPPORT & RESISTANCE						
Symbol	Close	Support 1	Support 2	Pivot Point	Resistance1	Resistance2
ACC	1334.85	1319.47	1304.08	1342.23	1357.62	1380.38
AMBUJACEM	207.20	202.57	197.93	207.03	211.67	216.13
ASIANPAINT	848.60	841.52	834.43	852.13	859.22	869.83
AXISBANK	507.75	500.53	493.32	509.22	516.43	525.12
BAJAJ-AUTO	2232.70	2212.53	2192.37	2241.27	2261.43	2290.17
BANKBARODA	184.75	181.90	179.05	185.85	188.70	192.65
BHARTIARTL	354.30	347.53	340.77	356.77	363.53	372.77
BHEL	226.45	223.67	220.88	228.23	231.02	235.58
BOSCHLTD	23210.45	22933.57	22656.68	23381.88	23658.77	24107.08
BPCL	883.20	860.80	838.40	873.90	896.30	909.40
CAIRN	148.95	145.90	142.85	148.10	151.15	153.35
CIPLA	682.15	663.17	644.18	674.08	693.07	703.98
COALINDIA	366.35	355.78	345.22	361.87	372.43	378.52
DRREDDY	4302.65	4215.72	4128.78	4267.73	4354.67	4406.68
GAIL	296.10	288.52	280.93	294.58	302.17	308.23
GRASIM	3446.55	3412.52	3378.48	3453.03	3487.07	3527.58
HCLTECH	971.05	959.50	947.95	969.75	981.30	991.55
HDFC	1186.15	1170.53	1154.92	1192.17	1207.78	1229.42
HDFCBANK	1027.45	1017.70	1007.95	1025.30	1035.05	1042.65
HEROMOTOCO	2397.20	2379.80	2362.40	2397.40	2414.80	2432.40
HINDALCO	80.05	78.97	77.88	80.83	81.92	83.78
HINDUNILVR	860.90	849.80	838.70	859.90	871.00	881.10
ICICIBANK	277.90	274.72	271.53	279.53	282.72	287.53
IDEA	155.85	153.95	152.05	155.45	157.35	158.85
INDUSINDBK	858.05	842.37	826.68	853.68	869.37	880.68
INFY	1094.40	1072.98	1051.57	1103.92	1125.33	1156.27
ITC	325.15	321.67	318.18	325.08	328.57	331.98
KOTAKBANK	651.70	639.83	627.97	649.37	661.23	670.77
LT	1602.90	1591.27	1579.63	1610.63	1622.27	1641.63
LUPIN	1935.55	1883.37	1831.18	1914.18	1966.37	1997.18
M&M	1220.90	1207.73	1194.57	1224.87	1238.03	1255.17
MARUTI	4167.20	4128.70	4090.20	4180.85	4219.35	4271.50
NMDC	101.00	97.55	94.10	101.10	104.55	108.10
NTPC	121.45	119.92	118.38	121.63	123.17	124.88
ONGC	239.30	235.20	231.10	241.80	245.90	252.50
PNB	144.85	142.07	139.28	144.78	147.57	150.28
POWERGRID	130.65	128.68	126.72	132.07	134.03	137.42
RELIANCE	855.90	848.85	841.80	860.85	867.90	879.90
SBIN	247.35	244.45	241.55	247.90	250.80	254.25
SUNPHARMA	898.95	875.50	852.05	893.45	916.90	934.85
TATAMOTORS	340.15	332.15	324.15	340.45	348.45	356.75
TATAPOWER	60.55	59.63	58.72	60.92	61.83	63.12
TATASTEEL	225.40	223.13	220.87	225.92	228.18	230.97
TCS	2564.05	2533.40	2502.75	2561.70	2592.35	2620.65
TECHM	515.00	509.67	504.33	517.33	522.67	530.33
ULTRACEMCO	2889.80	2860.35	2830.90	2907.85	2937.30	2984.80
VEDL	98.65	94.25	89.85	97.10	101.50	104.35
WIPRO	571.80	563.33	554.87	569.17	577.63	583.47
YESBANK	689.45	675.55	661.65	684.90	698.80	708.15
ZEEL	384.80	379.53	374.27	384.27	389.53	394.27



CORPORATE ACTION / BOARD MEETINGS

NSE Download Ref.No.:NSE/CML/30515:- Face Value Split - Aegis Logistics Limited from Rs. 10 to Rs.1 wef September 16, 2015

NSE Download Ref No :NSE/FAOP/30592:- Change in the Constituents of Indices. SOUTHBANK will replace CROMPGREAV in Nifty Midcap 50 Index. CROMPGREAV will be excluded from CNX Infrastructure Indexwef September 28, 2015

NSE Download Ref.No.:NSE /CML/30624:- Change in Name of the Company from Peacock Industries Limited to PIL ITALICA LIFESTYLE LTD. Symbol will change from PILIND to PILITA wef September 3, 2015

BOARD MEETINGS

COMPANY NAME	DATE	PURPOSE	RS. PER SH.
LAMBODHARA	1-Sep-15	Annual General Meeting /Dividend	1.5
L&TFH	1-Sep-15	Annual General Meeting /Dividend	0.8
LT	1-Sep-15	Annual General Meeting /Dividend	16.25
TBZ	1-Sep-15	Annual General Meeting /Dividend	1
AHLWEST	2-Sep-15	Annual General Meeting /Dividend	1
TTL	2-Sep-15	Annual General Meeting /Dividend	1
SAKSOFT	2-Sep-15	Annual General Meeting /Dividend	2.5
PHOENIXLTD	2-Sep-15	Annual General Meeting /Dividend	2.2
MINDACORP	2-Sep-15	Annual General Meeting /Dividend	0.2
LGBBROSLTD	2-Sep-15	Annual General Meeting /Dividend	3.8
GUJALKALI	2-Sep-15	Annual General Meeting /Dividend	4.5
HINDPETRO	2-Sep-15	Annual General Meeting /Dividend	24.5
ABIRLANUVO	2-Sep-15	Dividend	7
MAITHANALL	2-Sep-15	Annual General Meeting /Dividend	2
GEECEE	3-Sep-15	Annual General Meeting /Dividend	1.5
NTPC	3-Sep-15	Annual General Meeting /Dividend	1.75
SADBHAV	3-Sep-15	Annual General Meeting /Dividend	0.7
ESCORTS	3-Sep-15	Annual General Meeting /Dividend	1.2
EXCELINDUS	3-Sep-15	Dividend	4
SWANENERGY	3-Sep-15	Annual General Meeting /Dividend	0.15
REPCOHOME	3-Sep-15	Dividend	1.5
BAYERCROP	3-Sep-15	Annual General Meeting /Dividend	17

NEWS & RUMOURS:

- Gold (Spot Dollar) major support = \$1105/\$1076 & Resistance = \$1168/\$1197.
- Crude oil range->\$42 to \$52.
- S&P 500 Index Heads Toward Worst Month in More Than Three Years: - U.S. stocks declined, with the Standard & Poor's 500 Index on the verge of its worst month in more than three years, as investors harbored concerns about slowing global growth and the impact of a potential interest-rate increase by the Federal Reserve as soon as September.
- China stocks slide as crackdown on speculators spreads, lose 11 percent in August: - China stocks fell sharply on Monday before recovering much of their losses as regulators cracked down on speculators which Beijing blames for a 40 percent crash in the country's stock markets since June. Both main indexes plunged more than 4 percent at one point, pulling down markets across Asia, before paring losses in the afternoon. "A pull back in the market was to be expected as some investors are taking profits after the two-day rally," wrote Gerry Alfonso, director of Shenwan Hongyuan Securities, referring to a rebound on Thursday and Friday after ferocious selling earlier last week.
- Copper resumes decline as China worries linger: - Copper futures declined on Monday, as worries over China's slowing economy dampened demand for the red metal.
- Crude oil futures give back some of last week's massive gains: - Crude oil futures gave back some of the previous week's massive gains on Monday, as traders cashed out of the market after prices scored their biggest two-day percentage gain since 2009 last week.

TRENDS & OUTLOOK – DATE: 01- Sep- 2015

PRECIOUS METALS:

COMMDITY (MCX)	S2	S1	PIVOT POINT	R1	R2
GOLD (Oct)	26190	26420	26666	26967	27300
SILVER (Dec)	33000	34200	35100	36500	37786

BASE METALS

COMMDITY (MCX)	S2	S1	PIVOT POINT	R1	R2
COPPER (Nov)	334	341	346	354	360
ZINC (Sep)	115.45	118.20	120.75	123.45	126.70
LEAD (Sep)	111	113.20	115.50	118.60	121.30
NICKEL (Sep)	630	645	666	689	711

ENERGY

COMMDITY (MCX)	S2	S1	PIVOT POINT	R1	R2
CRUDE OIL (Sep)	2820	2910	3065	3245	3333
NATURAL GAS (Sep)	168	174	179	185	192

DATE TALKS : TODAY'S ECONOMIC DATA :

Manufacturing PMI, Non-Manufacturing PMI & Caixin Final Manufacturing PMI of China, RBA Rate Statement, Manufacturing PMI of GBP, GDP of CAD, Final Manufacturing PMI, ISM Manufacturing PMI, Construction Spending, IBD/TIPP Economic Optimism, ISM Manufacturing Prices, Total Vehicle Sales.



Registered Office

Indira House, 3rd Floor, 5 Topiwala Lane,
Opp. Lemington Road Police Station, Grant Road (East), Mumbai - 400007.

Corporate Office

'Ramavat House' E-15, Saket Nagar, Indore - 452018 (M.P.)

Customer Care

Tel: +91-731-4097170/ 71/ 72/ 73/ 74 M. +91 93031 72345

Email: customercare@indiratrade.com www.indiratrade.com



INSTITUTIONAL DEALING UNIT

Africa House, 5, Topiwalla Lane, Lamington Road, Mumbai, 400007

Tel: +91 22 30080678 Fax : +91 22 23870767 Email : ie@indiratrade.com

Disclaimer

This report is for private circulation within the Indira Group. This report is strictly confidential and for information of the selected recipient only and may not be altered in any way, transmitted to, copied or distributed, in part or in whole, to any other person or to the media or reproduced in any form. This report should not be construed as an offer or solicitation to buy or sell any securities or any interest in securities. It does not constitute a personal recommendation or take into account the particular investment objectives, financial situations, or any such factor. The information, opinions estimates and forecasts contained here have been obtained from, or are based upon, sources we believe to be reliable, but no representation of warranty, express or implied, is made by us to their accuracy or completeness. Opinions expressed are our current opinions as of the date appearing on this material only and are subject to change without notice.